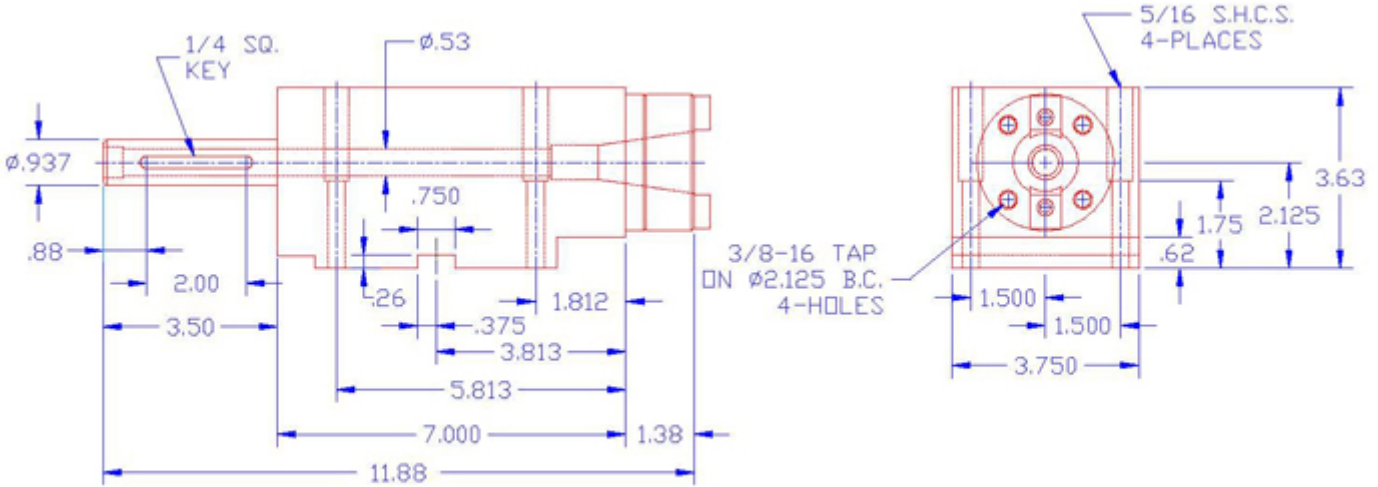
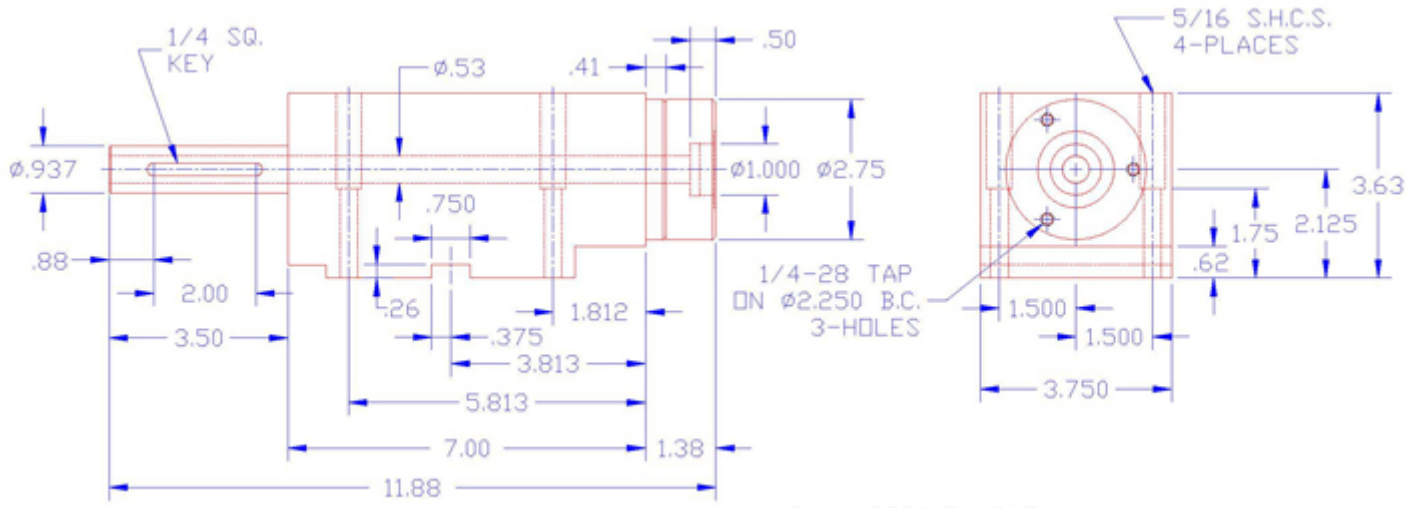


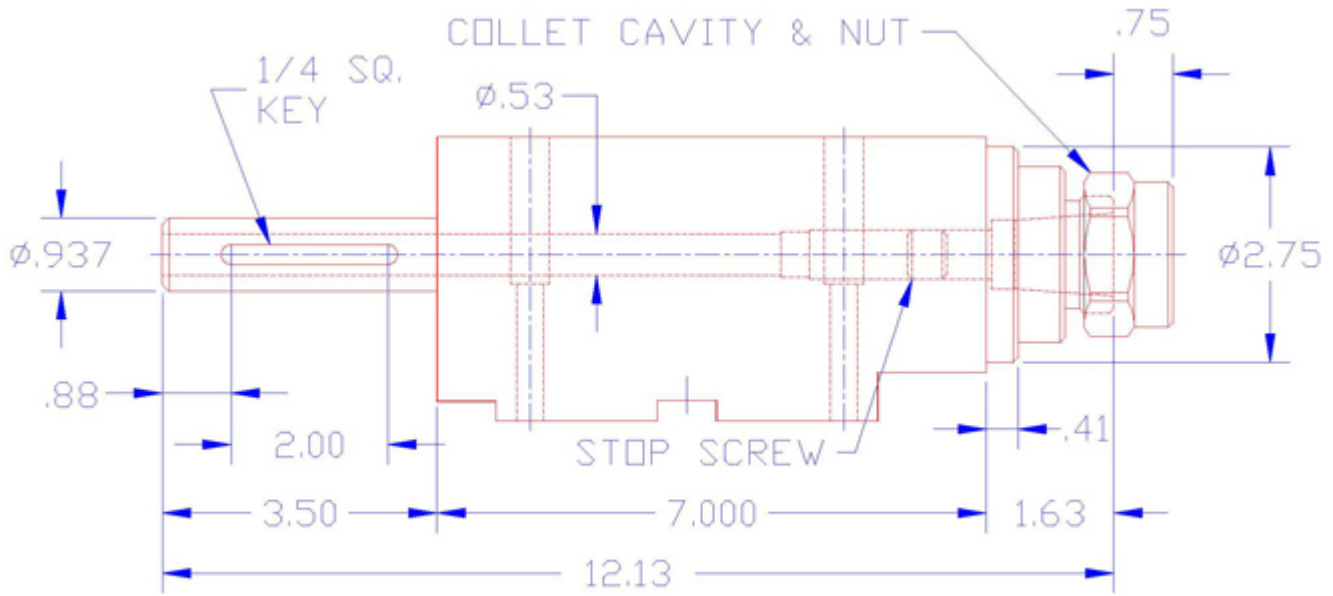
MB275 Series Machine Spindles



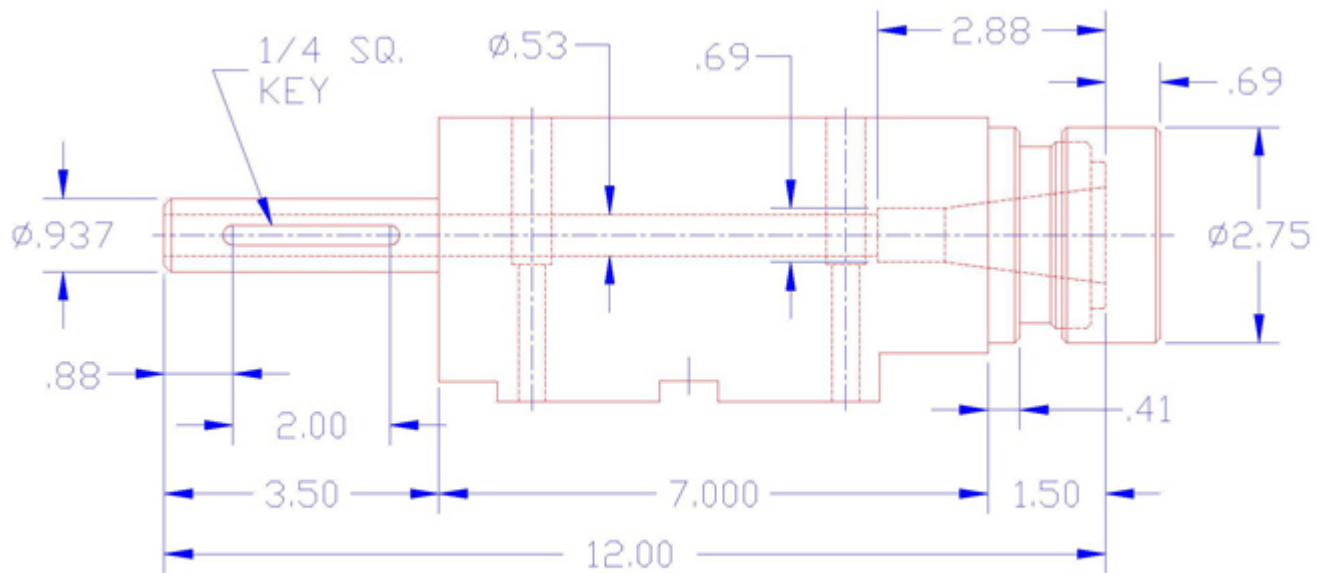
30 - NMTB 30 TAPER NOSE



BN - BORING NOSE



ETG75 - ERICKSON TG COLLET NOSE

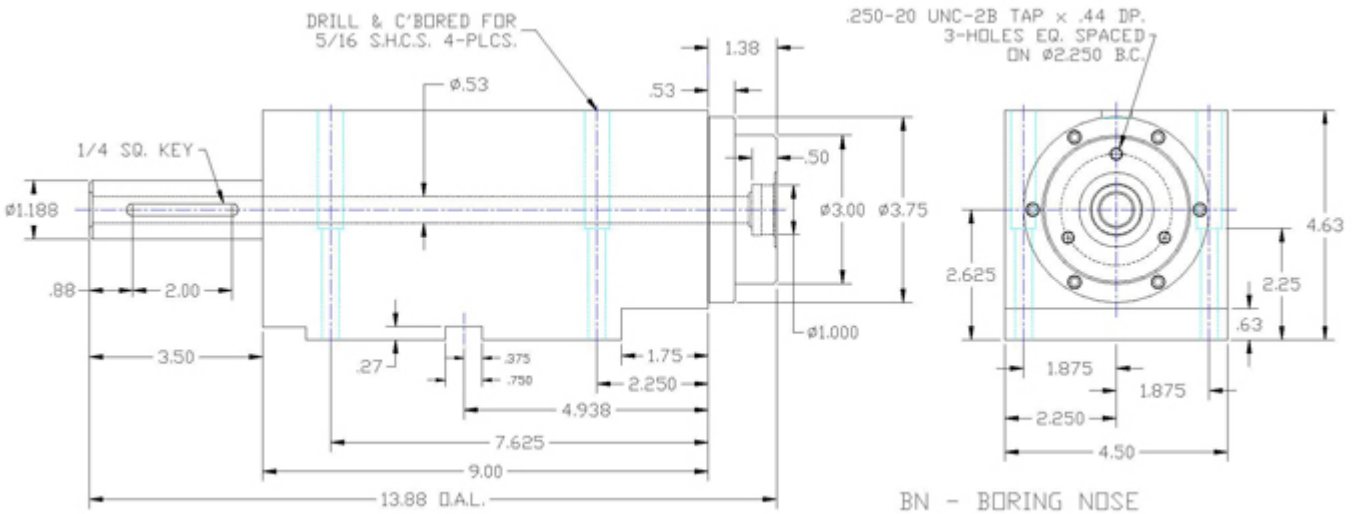
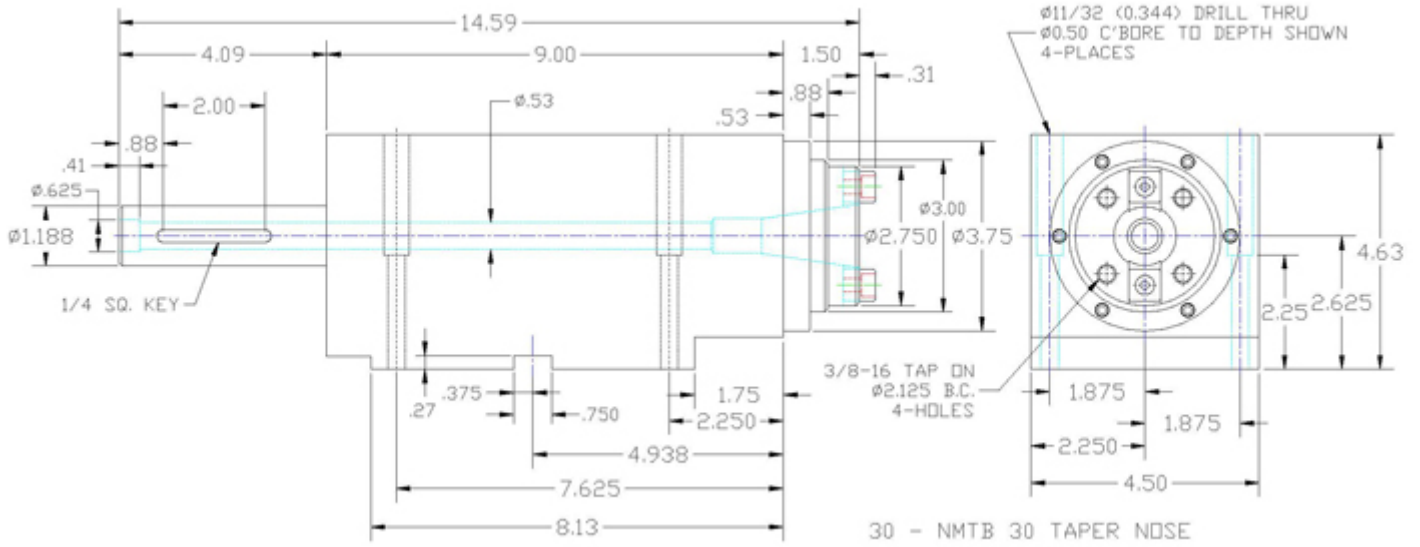


QC30 - #30 ERICKSON QUICK CHANGE NOSE

<b>Duplex ø30mm Nose Bearings / Duplex ø25mm Drive Bearings</b>						
Internal Construction Code	Maximum Axial Thrust (lb)	Maximum Speed (RPM)				Sealing
		Grease Lube		Air - Oil Lube		Nose / Drive End
		Steel Bearings	Hybrid Bearings	Steel Bearings	Hybrid Bearings	
2L2-VL	50	5250	5250	5250	5250	Contact / Labyrinth
2M2-VL	140	5250	5250	5250	5250	
2H2-VL	290	5250	5250	5250	5250	
2L2-LL	50	15,000	15,000	15,000	15,000	Labyrinth / Labyrinth
2M2-LL	140	15,000	15,000	15,000	15,000	
2H2-LL	290	15,000	15,000	15,000	15,000	

<b>Triplex ø30mm Nose Bearings / Duplex ø25mm Drive Bearings</b>						
Internal Construction Code	Maximum Axial Thrust (lb)	Maximum Speed (RPM)				Sealing
		Grease Lube		Air - Oil Lube		Nose / Drive End
		Steel Bearings	Hybrid Bearings	Steel Bearings	Hybrid Bearings	
3L2-VL	100	5250	5250	5250	5250	Contact / Labyrinth
3M2-VL	295	5250	5250	5250	5250	
3H2-VL	665	5250	5250	5250	5250	
3L2-LL	100	15,000	15,000	15,000	15,000	Labyrinth / Labyrinth
3M2-LL	295	15,000	15,000	15,000	15,000	
3H2-LL	665	15,000	15,000	15,000	15,000	

MB35 Series Machine Spindles



<b>Duplex ø45mm Nose Bearings / Duplex ø35mm Drive Bearings</b>						
Internal Construction Code	Maximum Axial Thrust (lb)	Maximum Speed (RPM)				Sealing
		Grease Lube		Air - Oil Lube		Nose / Drive End
		Steel Bearings	Hybrid Bearings	Steel Bearings	Hybrid Bearings	
2L2-VL	105	3725	3725	3725	3725	Contact / Labyrinth
2M2-VL	270	3725	3725	3725	3725	
2H2-VL	565	3725	3725	3725	3725	
2L2-LL	105	12,800	15,000	15,000	15,000	Labyrinth / Labyrinth
2M2-LL	270	11,200	14,000	15,000	15,000	
2H2-LL	565	8800	11,000	15,000	15,000	

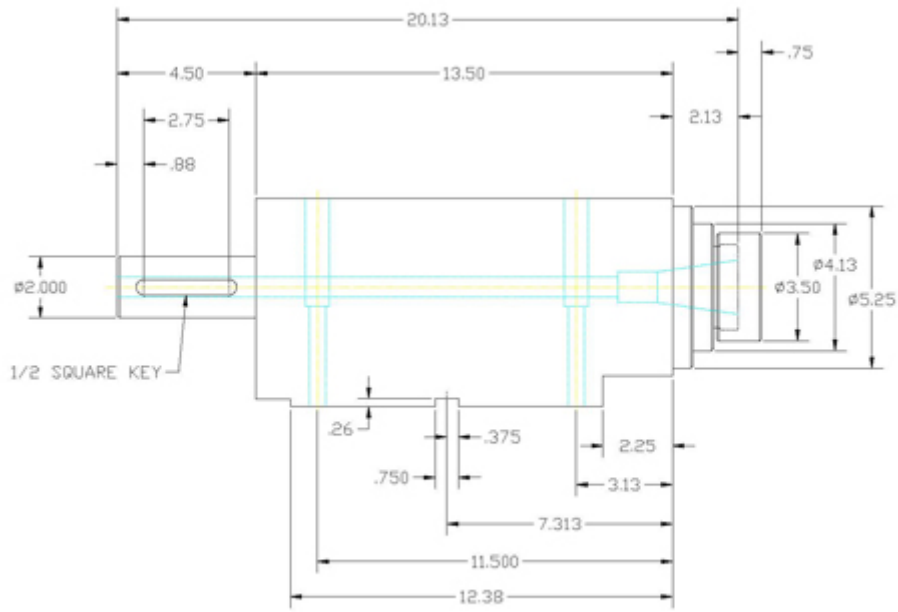
<b>Triplex ø45mm Nose Bearings / Duplex ø35mm Drive Bearings</b>						
Internal Construction Code	Maximum Axial Thrust (lb)	Maximum Speed (RPM)				Sealing
		Grease Lube		Air - Oil Lube		Nose / Drive End
		Steel Bearings	Hybrid Bearings	Steel Bearings	Hybrid Bearings	
3L2-VL	215	3725	3725	3725	3725	Contact / Labyrinth
3M2-VL	525	3725	3725	3725	3725	
3H2-VL	1200	3725	3725	3725	3725	
3L2-LL	215	11,200	14,000	15,000	15,000	Labyrinth / Labyrinth
3M2-LL	525	8800	11,000	14,300	15,000	
3H2-LL	1200	5600	7000	9100	15,000	



Duplex ø55mm Nose Bearings / Duplex ø45mm Drive Bearings						
Internal Construction Code	Maximum Axial Thrust (lb)	Maximum Speed (RPM)				Sealing
		Grease Lube		Air - Oil Lube		Nose / Drive End
		Steel Bearings	Hybrid Bearings	Steel Bearings	Hybrid Bearings	
2L2-VL	180	3100	3100	3100	3100	Contact / Labyrinth
2M2-VL	425	3100	3100	3100	3100	
2H2-VL	935	3100	3100	3100	3100	
2L2-LL	180	11,200	13,600	15,000	15,000	Labyrinth / Labyrinth
2M2-LL	425	9800	11,900	15,000	15,000	
2H2-LL	935	7700	9350	12,100	14,300	

Triplex ø55mm Nose Bearings / Duplex ø45mm Drive Bearings						
Internal Construction Code	Maximum Axial Thrust (lb)	Maximum Speed (RPM)				Sealing
		Grease Lube		Air - Oil Lube		Nose / Drive End
		Steel Bearings	Hybrid Bearings	Steel Bearings	Hybrid Bearings	
3L2-VL	350	3100	3100	3100	3100	Contact / Labyrinth
3M2-VL	850	3100	3100	3100	3100	
3H2-VL	1700	3100	3100	3100	3100	
3L2-LL	350	9800	11,900	15,000	15,000	Labyrinth / Labyrinth
3M2-LL	850	7700	9350	12,100	14,300	
3H2-LL	1700	4900	5950	7700	9100	



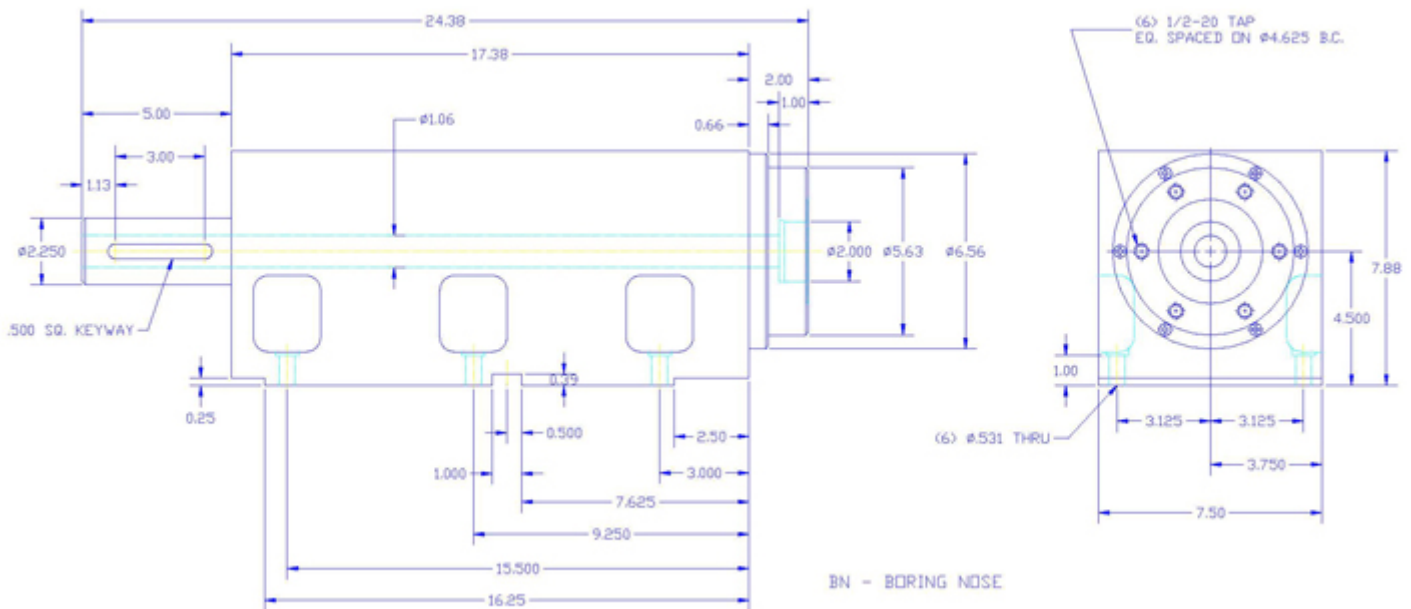
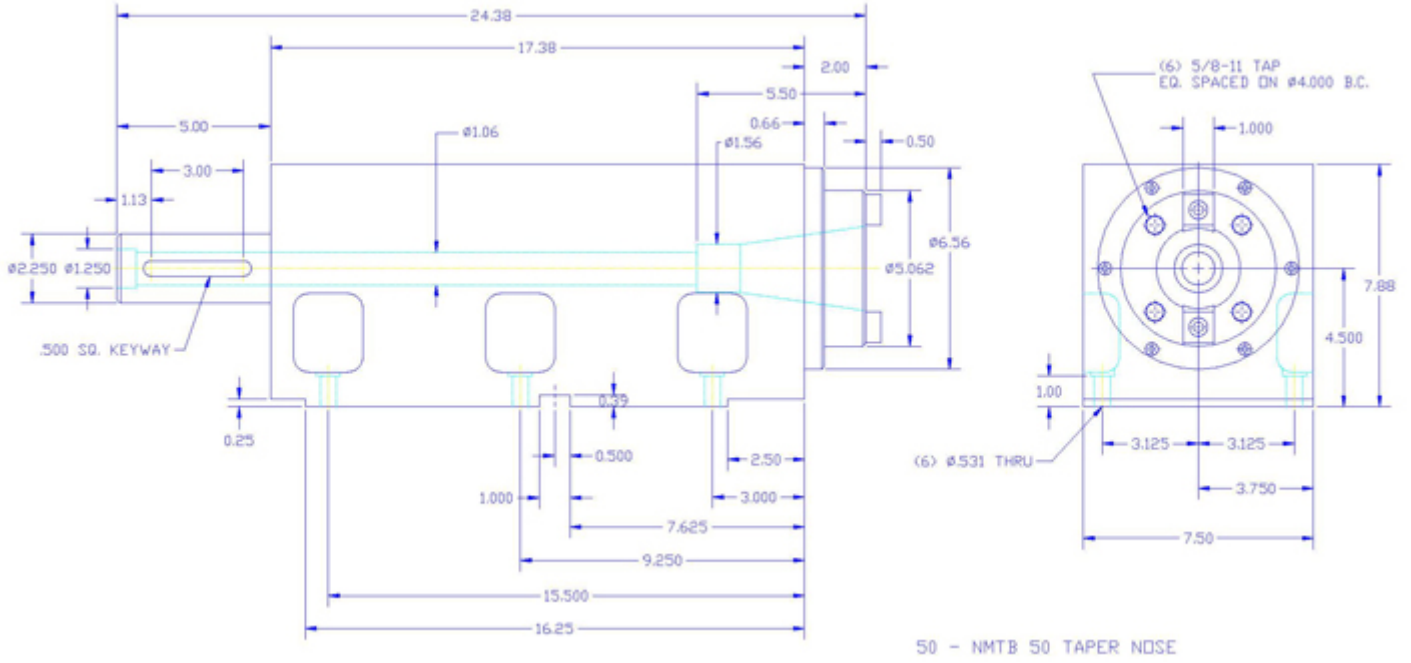


QC - #40 ERICKSDN QUICK CHANGE NDSE

<b>Duplex ø70mm Nose Bearings / Duplex ø55mm Drive Bearings</b>						
Internal Construction Code	Maximum Axial Thrust (lb)	Maximum Speed (RPM)				Sealing
		Grease Lube		Air - Oil Lube		Nose / Drive End
		Steel Bearings	Hybrid Bearings	Steel Bearings	Hybrid Bearings	
2L2-VL	190	2475	2475	2475	2475	Contact / Labyrinth
2M2-VL	550	2475	2475	2475	2475	
2H2-VL	1200	2475	2475	2475	2475	
2L2-LL	190	8000	11,200	13,600	15,000	Labyrinth / Labyrinth
2M2-LL	550	7000	9800	11,900	14,000	
2H2-LL	1200	5500	7700	9350	11,000	

<b>Triplex ø70mm Nose Bearings / Duplex ø55mm Drive Bearings</b>						
Internal Construction Code	Maximum Axial Thrust (lb)	Maximum Speed (RPM)				Sealing
		Grease Lube		Air - Oil Lube		Nose / Drive End
		Steel Bearings	Hybrid Bearings	Steel Bearings	Hybrid Bearings	
3L2-VL	420	2475	2475	2475	2475	Contact / Labyrinth
3M2-VL	1200	2475	2475	2475	2475	
3H2-VL	2650	2475	2475	2475	2475	
3L2-LL	420	7000	9800	11,900	14,000	Labyrinth / Labyrinth
3M2-LL	1200	5500	7700	9350	11,000	
3H2-LL	2650	3500	4900	5950	7000	

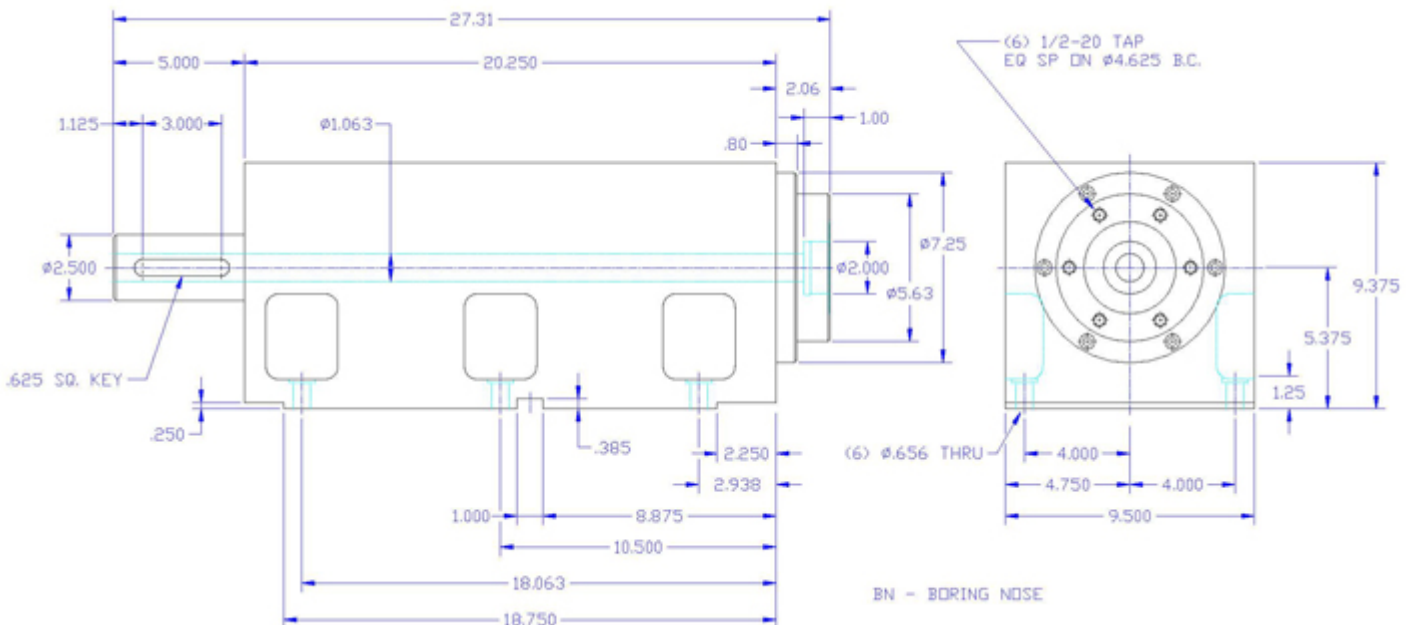
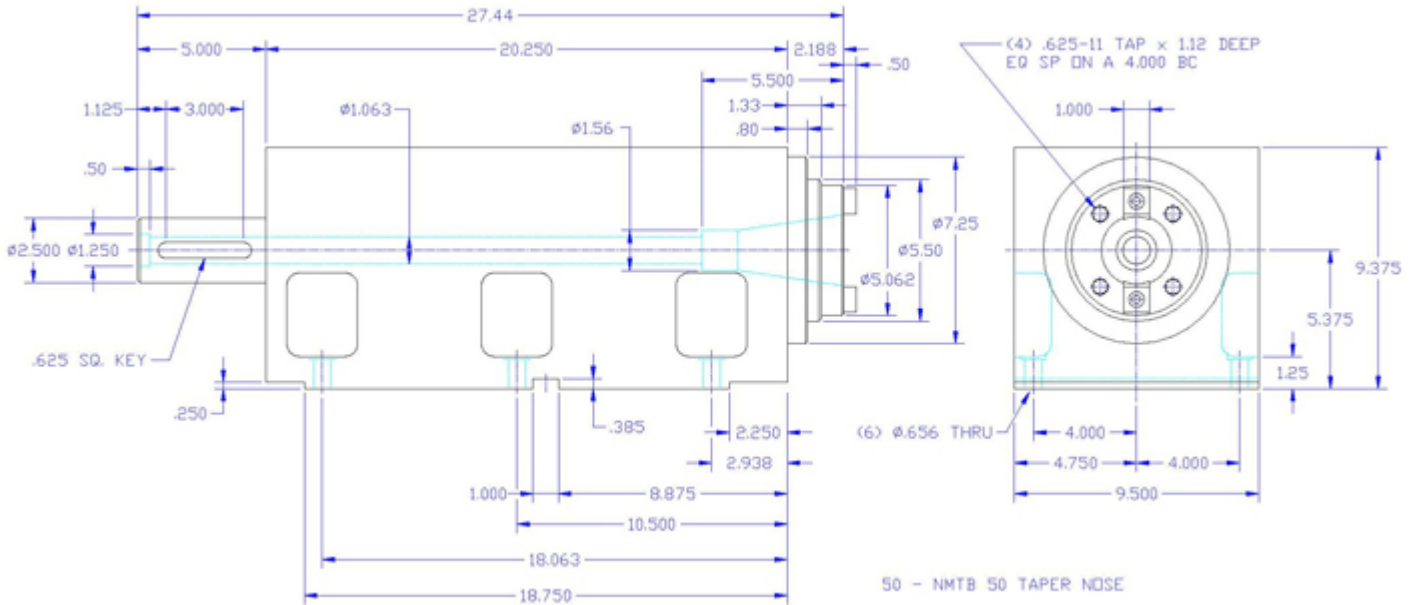
MC65 Series Machine Spindles



<b>Duplex ø85mm Nose Bearings / Duplex ø70mm Drive Bearings</b>						
Internal Construction Code	Maximum Axial Thrust (lb)	Maximum Speed (RPM)				Sealing
		Grease Lube		Air - Oil Lube		Nose / Drive End
		Steel Bearings	Hybrid Bearings	Steel Bearings	Hybrid Bearings	
2L2-VL	275	2100	2100	2100	2100	Contact / Labyrinth
2M2-VL	775	2100	2100	2100	2100	
2H2-VL	1400	2100	2100	2100	2100	
2L2-LL	275	6800	8800	11,200	13,600	Labyrinth / Labyrinth
2M2-LL	775	5950	6050	9800	11,900	
2H2-LL	1400	4675	3850	7700	9350	

<b>Triplex ø85mm Nose Bearings / Duplex ø70mm Drive Bearings</b>						
Internal Construction Code	Maximum Axial Thrust (lb)	Maximum Speed (RPM)				Sealing
		Grease Lube		Air - Oil Lube		Nose / Drive End
		Steel Bearings	Hybrid Bearings	Steel Bearings	Hybrid Bearings	
3L2-VL	575	2100	2100	2100	2100	Contact / Labyrinth
3M2-VL	1700	2100	2100	2100	2100	
3H2-VL	3800	2100	2100	2100	2100	
3L2-LL	575	5950	7700	9800	11,900	Labyrinth / Labyrinth
3M2-LL	1700	4675	6050	7700	9350	
3H2-LL	3800	2975	3850	4900	5950	

MB80 Series Machine Spindles



<b>Duplex ø100mm Nose Bearings / Duplex ø85mm Drive Bearings</b>						
Internal Construction Code	Maximum Axial Thrust (lb)	Maximum Speed (RPM)				Sealing
		Grease Lube		Air - Oil Lube		Nose / Drive End
		Steel Bearings	Hybrid Bearings	Steel Bearings	Hybrid Bearings	
2L2-VL	375	1750	1750	1750	1750	Contact / Labyrinth
2M2-VL	975	1750	1750	1750	1750	
2H2-VL	2050	1750	1750	1750	1750	
2L2-LL	375	6000	7600	9600	12,000	Labyrinth / Labyrinth
2M2-LL	975	5250	6650	8400	10,500	
2H2-LL	2050	4125	5225	6600	8520	

<b>Triplex ø100mm Nose Bearings / Duplex ø85mm Drive Bearings</b>						
Internal Construction Code	Maximum Axial Thrust (lb)	Maximum Speed (RPM)				Sealing
		Grease Lube		Air - Oil Lube		Nose / Drive End
		Steel Bearings	Hybrid Bearings	Steel Bearings	Hybrid Bearings	
3L2-VL	755	1750	1750	1750	1750	Contact / Labyrinth
3M2-VL	2125	1750	1750	1750	1750	
3H2-VL	4775	1750	1750	1750	1750	
3L2-LL	755	5250	6650	8400	10,500	Labyrinth / Labyrinth
3M2-LL	2125	4125	5225	6600	8250	
3H2-LL	4775	2625	3325	4200	5250	